

ROSEWOOD

CRESCENT

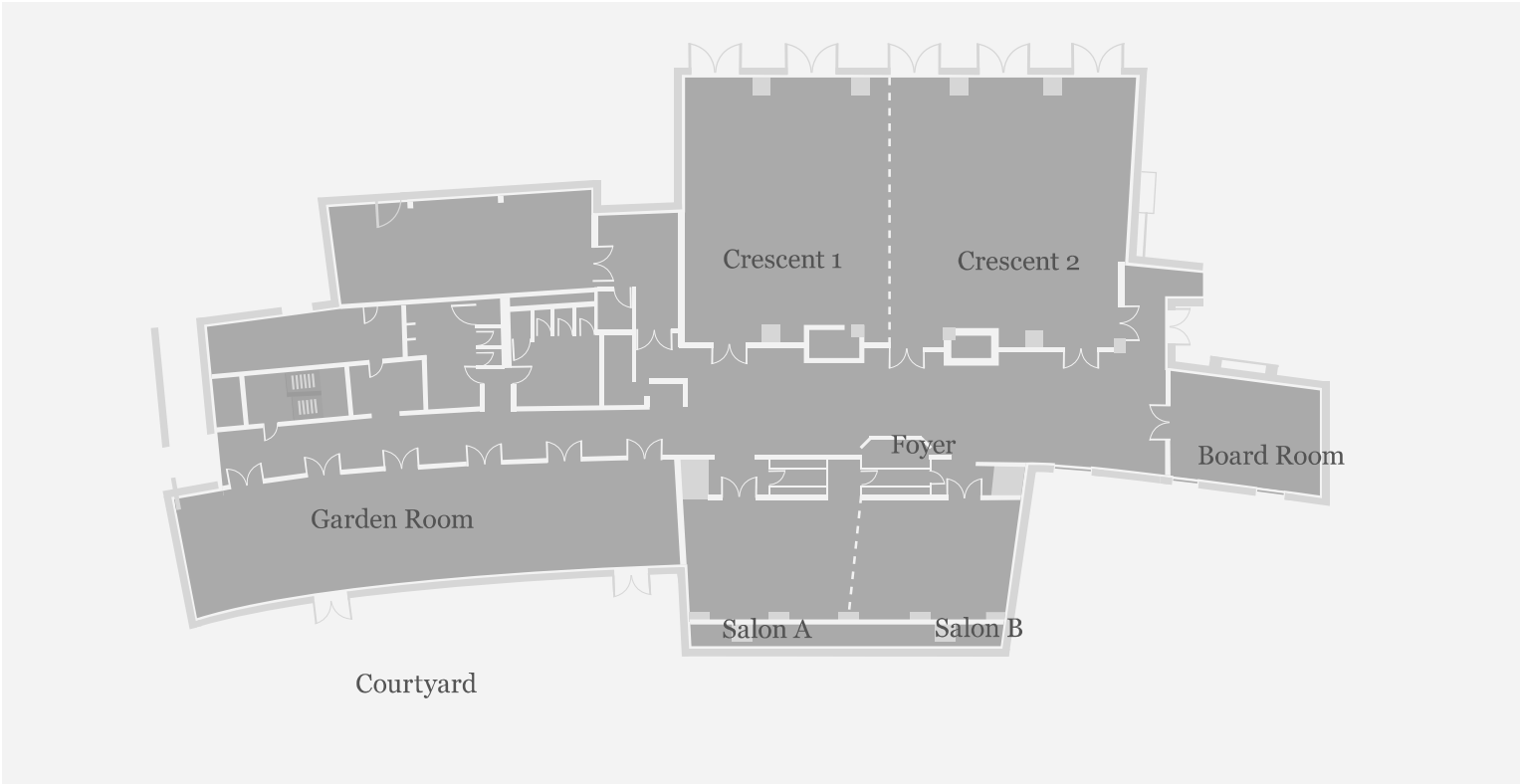
FLOOR PLANS & CAPACITY GUIDE



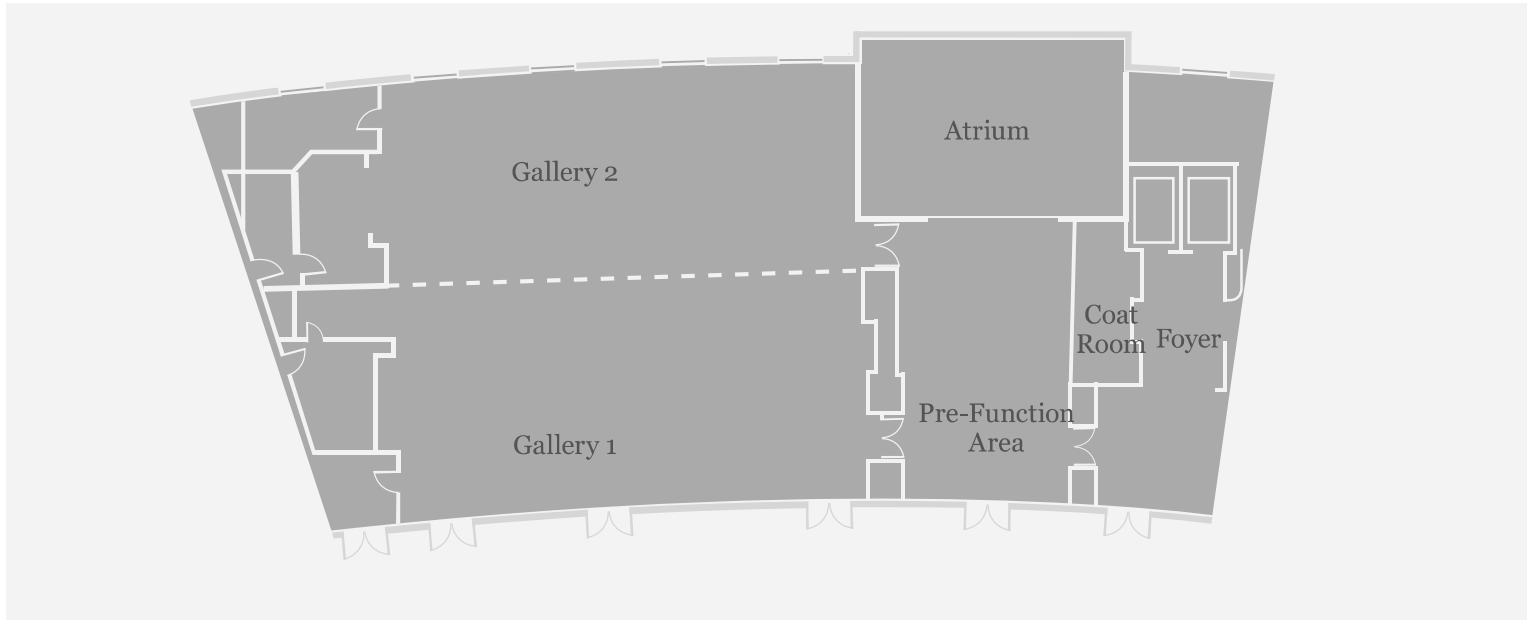
ROSEWOOD

CRESCENT

FLOOR PLAN: LOBBY



FLOOR PLAN: GALLERY I & II



ROSEWOOD

CRESCENT

FLOOR PLAN: THE CRESCENT CLUB & PRIVATE DINING ROOMS



ROSEWOOD

CRESCENT

FLOOR PLAN: EXECUTIVE CONFERENCE ROOMS (SECOND FLOOR)



ROSEWOOD
CRESCENT HOTEL

CAPACITY AND DIMENSIONS

	<i>SqFt</i>	<i>Size (Ft)</i>	<i>Ceiling</i>	<i>Reception</i>	<i>Dining</i>	<i>Theatre</i>	<i>Classroom</i>	<i>Exhibition</i>	<i>Conference</i>
Lobby Level									
Crescent Ballroom	3,146	71.5' x 44'	13'	300	250	300	150	-	80
Crescent I	1,166	26.5' x 44'	13'	80	70	100	60	-	32
Crescent II	1,980	48' x 44'	13'	200	120	200	90	-	44
Salons	1,170	52' x 22.5'	12'	80	70	90	50	-	30
Salon A	540	24' x 22.5'	12'	40	30	45	25	-	14
Salon B	630	28' x 22.5'	12'	40	40	45	25	-	16
Boardroom *	490	22.5' x 18.5'	12'	-	-	-	-	-	-
Garden Room **	1,296	81' x 16'	13'	125	80	130	-	-	-
Lower Level									
Wine Cellar	545	24' x 22.5'	12' 2"	-	25	-	-	-	-
Gallery I & II									
Full Capacity	3,416	56' x 61'	11' 4.5"	300 ***	250	300	220	20	-
Gallery I	1,677.5	27.5' x 61'	11' 4.5"	150 ***	130	150	110	10	40
Gallery II	1,738.5	28.5' x 61'	11' 4.5"	150 ***	120	125	100	10	40
The Crescent Club									
Rotisserie I	2,091	51' x 41'	12'	175	120	175	-	-	-
Rotisserie II	714	21' x 34'	12'	50-100	30-50	60	25	-	24
Rotisserie I & II	2,805	62' x 85'	12'	250	175	-	-	-	-
Gourmet II	1,400	61' x 24'	12'	125-150	90	150	50	-	40
Private Dining Rooms									
Mirrored *	176	16' x 11'	12'	-	6	-	-	-	-
Hickory *	204	17' x 12'	12'	-	8-10	-	-	-	-
Gold *	425	25' x 17'	12'	-	20	-	-	-	18-20
Club Room	779	41' x 14'	12'	-	50	70	30	-	18
Crescent *	616	28' x 22'	12'	-	12	-	-	-	12
Executive Conference Rooms (Second Floor)									
English Hunt Room *	734	24' x 22.5'	8' 11"	-	-	-	-	-	12
Egyptian Room *	935	31' x 30'	8' 11"	-	-	-	-	-	14
Pool Suite	1,223	24' x 52.5'	8' 11"	-	-	-	-	-	15
Court View Room	460	24' x 30'	8' 11"	-	-	-	-	-	12

The hotel can host up to 500 persons in the full Crescent Wing (Ballroom, Salons, Garden Room and Foyer).

* Permanent set-up

** All glass; not suitable for conference purposes

*** Can be expanded by using The Terrace for additional outside function space.